

 **BOEING**
COMPONENT
MAINTENANCE MANUAL

TO: ALL HOLDERS OF ELEVATOR CONTROLS POSITION TRANSMITTER ASSEMBLY COMPONENT
MAINTENANCE MANUAL 27-38-11

REVISION NO. 5 DATED JUL 01/92

HIGHLIGHTS

Pages which have been added or revised are outlined below together with the highlights of the revision. Remove and insert the affected pages as listed and enter Revision No. and date on the Record of Revision Sheet.

CHAPTER/SECTION

AND PAGE NO.

DESCRIPTION OF CHANGE

TITLE PAGE

Added new top assemblies 251T2010-13 and -14 per
PRR B12085.

1

TR & SB RECORD

1

701-702

702,1003-1004,

1006-1011

INTRODUCTION

Added verification date.

1

27-38-11

HIGHLIGHTS

01.1

Page 1

Jul 01/92



ELEVATOR CONTROLS POSITION TRANSMITTER ASSEMBLY

PART NUMBERS 251T2010-3 THRU -14

COMPONENT MAINTENANCE MANUAL
WITH
ILLUSTRATED PARTS LIST

27-38-11

TITLE PAGE

Page 1

Jul 01/92

01.1



REVISION RECORD

- Retain this record in front of manual. On receipt of revision, insert revised pages in the manual, and enter revision number, date inserted and initial.

REVISION NUMBER	REVISION DATE	DATE FILED	BY	REVISION NUMBER	REVISION DATE	DATE FILED	BY



TEMPORARY REVISION AND SERVICE BULLETIN RECORD

BOEING SERVICE BULLETIN	BOEING TEMPORARY REVISION	OTHER DIRECTIVE	DATE OF INCORPORATION INTO MANUAL
		PRR B11811 PRR B12085	APR 01/90 JUL 01/92

27-38-11

TR & SB RECORD

01.1

Page 1

Jul 01/92


BOEING
 COMPONENT
 MAINTENANCE MANUAL

PAGE	DATE	CODE	PAGE	DATE	CODE
27-38-11			REPAIR 1-1		
			601	JAN 01/88	01.1
			602	BLANK	
TITLE PAGE			ASSEMBLY		
*1	JUL 01/92	01.1	*701	JUL 01/92	01.1
2	BLANK		*702	JUL 01/92	01.1
REVISION RECORD			*703	JUL 01/92	01.101
1	JUL 10/83	01	*704	BLANK	
2	BLANK		SPECIAL TOOLS		
TR & SB RECORD			901	JAN 10/85	01.1
*1	JUL 01/92	01.1	902	BLANK	
2	BLANK		ILLUSTRATED PARTS LIST		
LIST OF EFFECTIVE PAGES			1001	JUL 10/83	01
*1	JUL 01/92	01	*1002	JUL 01/92	01.1
THRU LAST PAGE			*1003	JUL 01/92	01.1
CONTENTS			*1004	JUL 01/92	01.1
1	JAN 10/85	01.1	*1005	BLANK	
2	BLANK		*1006	JUL 01/92	01.1
INTRODUCTION			*1007	JUL 01/92	01.1
*1	JUL 01/92	01.1	*1008	JUL 01/92	01.1
2	BLANK		*1009	JUL 01/92	01.1
DESCRIPTION & OPERATION			*1010	JUL 01/92	01.1
1	JAN 01/88	01.1	*1011	JUL 01/92	01.1
2	BLANK		*1012	BLANK	
DISASSEMBLY					
301	JAN 10/85	01.1			
302	BLANK				
CHECK					
501	JAN 01/88	01.1			
502	BLANK				
REPAIR-GENERAL					
601	JUL 10/83	01			
602	BLANK				

* = REVISED, ADDED OR DELETED

27-38-11
 EFFECTIVE PAGES
 LAST PAGE Page 1
 01 Jul 01/92



TABLE OF CONTENTS

<u>Paragraph Title</u>	<u>Page</u>
Description and Operation	1
Testing and Trouble Shooting (not applicable)	
Disassembly.	301
Cleaning*[1]	
Check.	501
Repair	601
Assembly	701
Fits and Clearances (not applicable)	
Special Tools.	901
Illustrated Parts List	1001

*[1] Special instructions not required. Use standard industry practices and information contained in 20-30-03.

27-38-11

CONTENTS

01.1

Page 1

Jan 10/85



INTRODUCTION

The instructions in this manual provide the information necessary to perform maintenance functions ranging from simple checks and replacement to complete shop-type repair.

This manual is divided into separate sections:

- | | |
|---|------------------------------|
| 1. Title Page | 4. List of Effective Pages |
| 2. Record of Revisions | 5. Table of Contents |
| 3. Temporary Revisions &
Service Bulletin Record | 6. Introduction |
| | 7. Procedures & IPL Sections |

Refer to the Table of Contents for the page location of applicable sections.

The beginning of the REPAIR section includes a list of the separate repairs and a list of applicable standard Boeing practices.

An explanation of the use of the Illustrated Parts List is provided in the Introduction to that section.

All weights and measurements used in the manual are in English units, unless otherwise stated. When metric equivalents are given they will be in parentheses following the English units.

Design changes, optional parts, configuration differences and Service Bulletin modifications create alternate part numbers. These are identified in the Illustrated Parts List (IPL) by adding an alphabetical character to the basic item number. The resulting item number is called an alpha-variant. Throughout the manual, IPL basic item number references also apply to alpha-variants unless otherwise indicated.

Verification:

| Assembly SEP 13/90

27-38-11

INTRODUCTION

01.1

Page 1

Jul 01/92



ELEVATOR CONTROLS POSITION TRANSMITTER ASSEMBLY

DESCRIPTION AND OPERATION

1. Description

A. The elevator controls position transmitter assembly comprises a synchro transmitter, an aluminum bracket and a nylon (or aluminum) crank arm. The transmitter rotor is connected by a crank arm and pushrod to the inboard elevator.

2. Operation

A. Two elevator position transmitters, one for each elevator, send elevator position data to the engine indicating and crew alerting system (EICAS) by electrical signals. The EICAS processes the signals and displays the position of the elevator on the screen.

3. Leading Particulars (approximate)

Width -- 3 inches
Length -- 3 inches
Height -- 5 inches
Weight -- 2 pounds

27-38-11

DESCRIPTION & OPERATION

01.1

Page 1

Jan 01/88



DISASSEMBLY

NOTE: Disassemble this component only as necessary to complete fault isolation, determine the serviceability of parts, perform required repairs, and restore the unit to serviceable condition.

1. Disassemble this component using standard industry practices.
2. Refer to manufacturer's instructions for overhaul procedure for transmitter (45, IPL Fig. 1).

27-38-11

DISASSEMBLY

01.1

Page 301

Jan 10/85



CHECK

1. Check all parts for obvious defects in accordance with standard industry practices.
2. Penetrant check the following parts (Ref IPL Fig. 1) per 20-20-02.
 - A. Bracket (35A, 40A)
 - | B. Crank (30A, 30B)

27-38-11

CHECK

01.1

Page 501

Jan 01/88


BOEING
 COMPONENT
 MAINTENANCE MANUAL
REPAIR – GENERAL1. Content

- A. Repair, refinish and replacement procedures are included in separate repair sections as follows:

<u>P/N</u>	<u>NAME</u>	<u>REPAIR</u>
--	MISCELLANEOUS PARTS	1-1

2. Standard Practices

- A. Refer to the following standard practices as applicable, for details of procedures in individual repairs.

20-30-02	Stripping of Protective Finishes
20-30-03	General Cleaning Procedures
20-41-01	Decoding Table for Boeing Finish Codes
20-41-02	Application of Chemical and Solvent Resistant Finishes
20-43-01	Chromic Acid Anodizing

3. Materials

NOTE: Equivalent substitutes may be used.

- A. Primer -- BMS 10-11, type 1 (Ref 20-60-02)

27-38-11

REPAIR-GENERAL

01

Page 601

Jul 10/83

MISCELLANEOUS PARTS REFINISH – REPAIR 1-1

1. Repair of parts listed in Fig. 601 consists of restoration of the original finish.

IPL FIG. & ITEM	MATERIAL	FINISH
<u>Fig. 1</u> Bracket (35, 40)	Al alloy	Chromic acid anodize (F-17.02) all over. Apply one coat of primer BMS 10-11, type 1 (F-20.02) except in 1.000 inch diameter bore.
Crank (30A,30B)	Al alloy	Chemically treat or chromic acid anodize. Apply one layer of BMS 10-11, type 1 primer (F-18.05) all over, except omit primer from internal serrations.

Refinish Details
Figure 601

27-38-11

REPAIR 1-1

01.1

Page 601

Jan 01/88

ASSEMBLY1. Materials and Equipment

NOTE: Equivalent substitutes may be used.

- A. Sealant -- BMS 5-95 (Ref 20-60-04)
- B. Voltmeter -- Simpson model 465
- C. Power Supply -- 26v ac, 400Hz crystal oscillator controlled

2. Assembly

- A. Hand sand faying surface of position transmitter (45) and bracket (35A) using aluminum oxide or garnet abrasive paper with 180 grit to ensure electrical bonding per 20-11-03.
- B. Maximum resistance between position transmitter (45) and bracket (35A) shall not exceed 0.01 ohms.
- C. Install bracket (35A) on position transmitter (45) as follows:
 - (1) Insert position transmitter (45) into bracket (35A).
 - (2) Install one of the screws (15) (in the nearest side to splined shaft) on bracket (35A) and ensure that screw (15) engages circumferential groove on position transmitter (45). Install washer (22) and nut (25). Do not tighten nut.
 - (3) Install other screw (15), washer (22) and nut (25). Do not tighten nut.
- D. Rotate position transmitter (45) until zero electrical index mark on housing is pointing toward bracket (35A) as shown in Fig. 701, detail A.
- E. Install crank (30) on position transmitter (45) as follows:
 - (1) Install crank (30) on splined shaft of position transmitter (45) with zero electrical index mark on shaft pointing toward hole in crank clevis as shown in Fig. 701.
 - (2) Install screw (10) while pushing crank (30) down until screw (10) engages circumferential groove on shaft.
 - (3) Install washer (20A) and nut (25). Tighten screw (10).
- F. Position crank (30) relative to bracket (35A) as shown in Fig. 701.
- G. Apply 26V AC, 400 Hz to pins 1 and 2 of electrical connector.

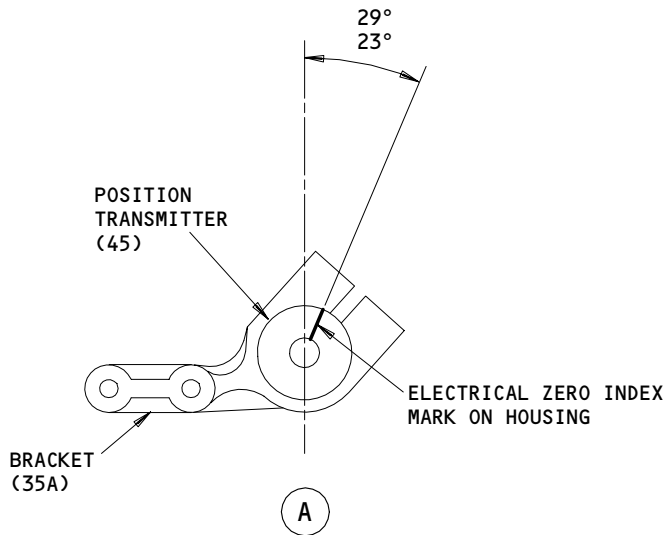
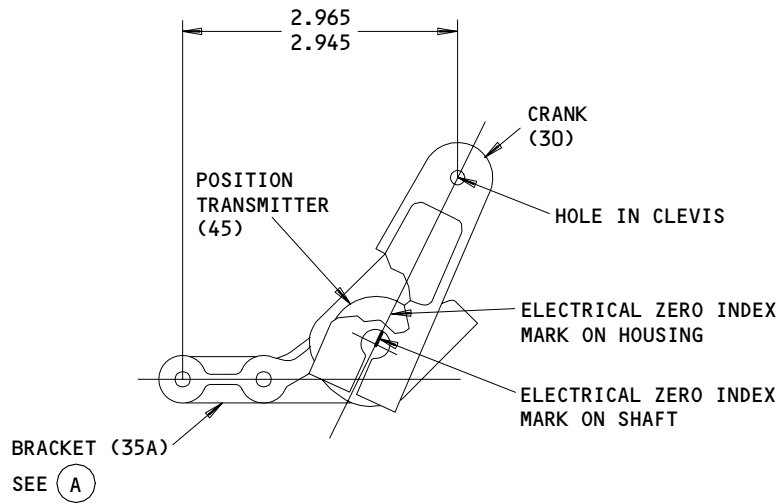
27-38-11ASSEMBLY
Page 701
Jul 01/92

01.1

- H. Rotate position transmitter body (45) until voltage between pins 4 and 5 is less than 50 millivolts rms.
- I. Tighten screws (15) to secure position transmitter (45) to bracket (35A).
- J. Fillet seal between position transmitter (45) and bracket (35A) with sealant.
- | K. Seal screws (15), washers (22) and nuts (25) with sealant.
- | L. Install attaching components screw (12), washer (21), and nut (26).
- M. Prepare and store component in accordance with standard industry practices and information contained in 20-44-02.

27-38-11ASSEMBLY
Page 702
Jul 01/92

01.1



ALL DIMENSIONS ARE IN INCHES

Assembly Details
Figure 701

80441

27-38-11

01.101

ASSEMBLY
Page 703
Jul 01/92

SPECIAL TOOLS, FIXTURES, AND EQUIPMENT

NOTE: Equivalent substitutes may be used.

- |1. Voltmeter -- Simpson model 465
- |2. Power Supply -- 25v ac, 400Hz crystal oscillator controled

27-38-11

SPECIAL TOOLS

01.1

Page 901

Jan 10/85



ILLUSTRATED PARTS LIST

1. This section lists and illustrates replaceable or repairable component parts. The Illustrated Parts Catalog contains a complete explanation of the Boeing part numbering system.

2. Indentures show parts relationships as follows:

Assembly

Detail Parts for Assembly

Subassembly

Attaching Parts for Subassembly

Detail Parts for Subassembly

Detail Installation Parts (Included only if installation parts may be returned to shop as part of assembly)

3. One use code letter (A, B, C, etc.) is assigned in the EFF CODE column for each variation of top assembly. All listed parts are used on all top assemblies except when limitations are shown by use code letter opposite individual part entries.

4. Letter suffixes (alpha-variants) are added to item numbers for optional parts, Service Bulletin modification parts, configuration differences (except left- and right-hand parts), product improvement parts, and parts added between two sequential item numbers. The alpha-variant is not shown on illustrations when appearance and location of all variants of the part are the same.

5. Service Bulletin modifications are shown by the notations PRE SB XXXX and POST SB XXXX.

A. When a new top assembly part number is assigned by Service Bulletin, the notations appear at the top assembly level only. The configuration differences at detail part level are then shown by use code letter.

B. When the top assembly part number is not changed by the Service Bulletin, the notations appear at the detail part level.

6. Parts Interchangeability

Optional
(OPT)

The parts are optional to and interchangeable with other parts having the same item number.

Supersedes, Superseded By
(SUPSDS, SUPSD BY)

The part supersedes and is not interchangeable with the original part.

Replaces, Replaced By
(REPLS, REPLD BY)

The part replaces and is interchangeable with, or is an alternate to, the original part.

27-38-11

ILLUSTRATED PARTS LIST

01

Page 1001

Jul 10/83

VENDORS

10630 ANILLO INDUSTRIES, INCORPORATED
2090 NORTH GLASSELL
ORANGE, CALIFORNIA 92667

15653 KAYNAR MICRODOT AEROSPACE FASTENING SYSTEM
800 SOUTH COLLEGE BLVD PO BOX 3001
FULLERTON, CALIFORNIA 92634-3001

33463 NOVATRONICS OF CANADA LTD
677 ERIE STREET
STRATFORD, ONTARIO, CANADA N5A 6VA

51761 ASTRO INSTRUMENT CORP
450 GOLDSBY BLVD
DEERFIELD, FLORIDA 33442-3019

52828 REPUBLIC FASTENER MFG CORP
1300 RANCHO CONEJO BLVD
NEWBURY PARK, CALIFORNIA 91320-1405

71087 BOOTS ACFT NUT DIV TOWNSEND CO SEE TEXTRON INC CHERRY
FASTENER TOWNSEND DIV V11815

72962 ELASTIC STOP NUT A DIV OF HARTFORD INDUSTRIES INC
2330 VAUXHALL ROAD
UNION, NEW JERSEY 07083-5038

80539 SPS TECHNOLOGIES INC AEROSPACE PRODUCTS DIV
2701 SOUTH HARBOR BOULEVARD PO BOX 1259
SANTA ANA, CALIFORNIA 92702-1259

86197 CLIFTON PRECISION LITTON SYSTEM INC
MAPLE AT BROADWAY
CLIFTON HEIGHTS, PENNSYLVANIA 19018

92215 VOI-SHAN DIV OF VSI CORP SUB OF FAIRCHILD INDUSTRIAL INC
8463 HIGUERA STREET
CULVER CITY, CALIFORNIA 90230

27-38-11

ILLUSTRATED PARTS LIST
01.1 Page 1002
Jul 01/92


BOEING
 COMPONENT
 MAINTENANCE MANUAL

PART NUMBER	AIRLINE PART NO.	FIG.	ITEM	TTL REQ
AN960JD10		1	20A	1
		1	21	1
BACN10JC3		1	25	3
		1	26	1
BACW10AT23AS		1	22	2
BRH10A3		1	25	4
H10-3BAC		1	25	4
H505A		1	45E	1
H505B		1	45G	1
H509B		1	45F	1
NAS623-3-10		1	12	1
NAS623-3-12		1	10A	1
NAS623-3-16		1	10	1
NAS623-3-20		1	15	2
NAS623-3-8		1	12A	1
NS202101-02		1	25	4
RMLH9075-3W		1	25	4
S250N104-1		1	45E	1
S250N104-4		1	45G	1
S250N104-6		1	45F	1
		1	45L	1
T6S1032J		1	25	4
VN303A02		1	25	4
13TX0115A		1	45	1
13TX0615A		1	45A	1
251T2010-10		1	5C	RF
251T2010-11		1	1D	RF
251T2010-12		1	5D	RF
251T2010-13		1	1E	RF
251T2010-14		1	5E	RF
251T2010-3		1	1	RF
251T2010-4		1	5	RF
251T2010-5		1	1A	RF
251T2010-6		1	5A	RF
251T2010-7		1	1B	RF
251T2010-8		1	5B	RF
251T2010-9		1	1C	RF
60B40042-3		1	45	1
60B40042-7		1	45A	1
65B80863-12		1	40A	1
65B80863-13		1	35A	1
69-15812-1		1	30	1
69-15812-2		1	30C	1
		1	30D	1

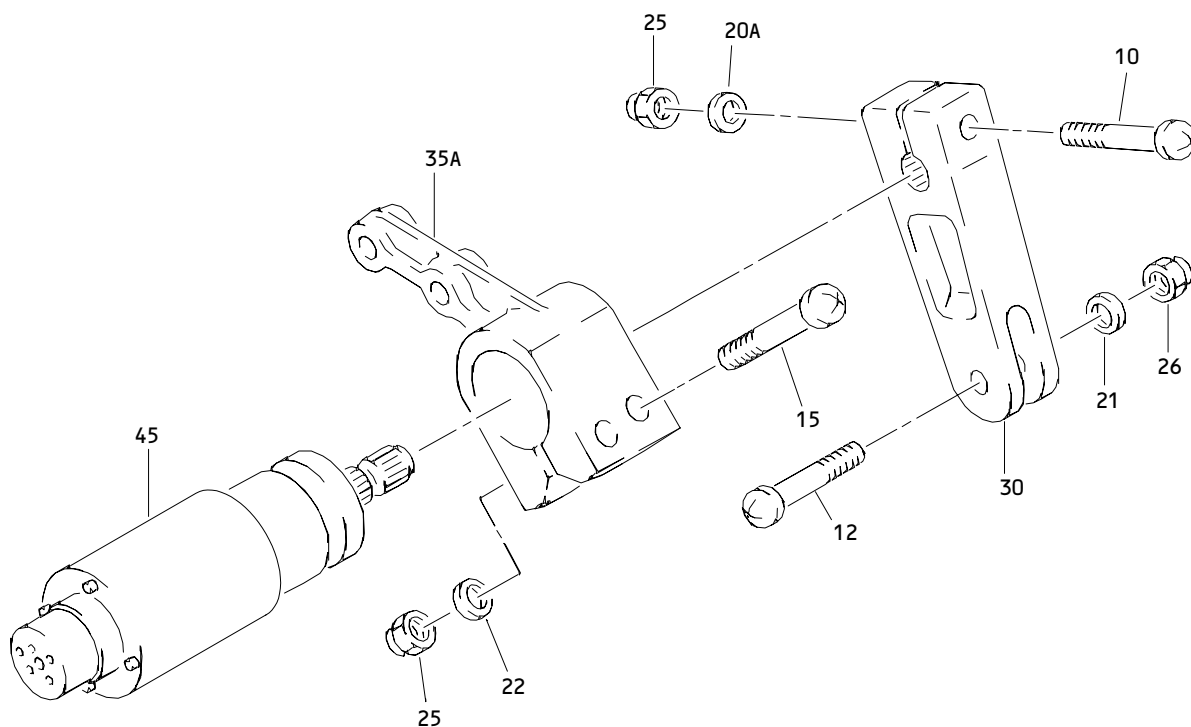
27-38-11

 ILLUSTRATED PARTS LIST
 01.1 Page 1003
 Jul 01/92

PART NUMBER	AIRLINE PART NO.	FIG.	ITEM	TTL REQ
69-71007-3		1	30A	1
7977-18-01		1	45C	1
96-02		1	25	4

27-38-11

ILLUSTRATED PARTS LIST
01.1 Page 1004
Jul 01/92



Elevator Controls Position Transmitter Assembly
Figure 1

27-38-11

ILLUSTRATED PARTS LIST
01.1 Page 1006
Jul 01/92


BOEING
 COMPONENT
 MAINTENANCE MANUAL

FIG. & ITEM	PART NO.	AIRLINE PART NUMBER	NOMENCLATURE 1234567	EFF CODE	QTY PER ASSY
01- -1	251T2010-3		TRANSMITTER ASSY-ELEV CONT POSITION (LH)	A	RF
-1A	251T2010-5		TRANSMITTER ASSY-ELEV CONT POSITION (LH)	C	RF
R -1B	251T2010-7		TRANSMITTER ASSY-ELEV CONT POSITION (LH)	E	RF
R -1C	251T2010-9		TRANSMITTER ASSY-ELEV CONT POSITION (LH)	G	RF
R -1D	251T2010-11		TRANSMITTER ASSY-ELEV CONT POSITION (LH)	J	RF
R -1E	251T2010-13		TRANSMITTER ASSY-ELEV CONT POSITION (LH)	L	RF
-5	251T2010-4		TRANSMITTER ASSY-ELEV CONT POSITION (RH)	B	RF
-5A	251T2010-6		TRANSMITTER ASSY-ELEV CONT POSITION (RH)	D	RF
R -5B	251T2010-8		TRANSMITTER ASSY-ELEV CONT POSITION (RH)	F	RF
R -5C	251T2010-10		TRANSMITTER ASSY-ELEV CONT POSITION (RH)	H	RF
R -5D	251T2010-12		TRANSMITTER ASSY-ELEV CONT POSITION (RH)	K	RF
R -5E	251T2010-14		TRANSMITTER ASSY-ELEV CONT POSITION (RH)	M	RF
10	NAS623-3-16		.SCREW- (ITEM 30A WITH ITEMS 12A AND 10A OR ITEM 30C WITH ITEM 12 AND ITEM 10 OPT TO ITEM 30 WITH ITEM 12 AND ITEM 10)	A-D,J ,K	1
R -10A	NAS623-3-12		.SCREW- (ITEM 30A WITH ITEMS 12A AND 10A OR ITEM 30C WITH ITEM 12 AND ITEM 10 OPT TO ITEM 30 WITH ITEM 12 AND ITEM 10)	A-D,J ,K	1
R -10B	NAS623-3-12		.SCREW	E-H	1
R -10C	NAS623-3-16		.SCREW	L,M	1
R 12	NAS623-3-10		.SCREW *[1] (ITEM 30A WITH ITEMS 12A AND 10A OR ITEM 30C WITH ITEM 12 AND ITEM 10 OPT TO ITEM 30 WITH ITEM 12 AND ITEM 10)	A-D,J ,K	1

27-38-11

ILLUSTRATED PARTS LIST

01.1

Page 1007

Jul 01/92

FIG. & ITEM	PART NO.	AIRLINE PART NUMBER	NOMENCLATURE 1234567	EFF CODE	QTY PER ASSY
R 01- -12A	NAS623-3-8		.SCREW *[1] (ITEM 30A WITH ITEMS 12A AND 10A OR ITEM 30C WITH ITEM 12 AND ITEM 10 OPT TO ITEM 30 WITH ITEM 12 AND ITEM 10)	A-D, J ,K	1
-12B	NAS623-3-8		DELETED		
15	NAS623-3-20		.SCREW		2
20	AN960PD10		DELETED		
R 20A	AN960JD10		.WASHER		1
21	AN960JD10		.WASHER *[1]		1
R 22	BACW10AT23AS		.WASHER (V10630) (SPEC BACW10AT23AS)		2
R 25	H10-3BAC		.NUT (V15653) (SPEC BACN10JC3) (OPT NS202101-02 (V80539)) (OPT RMLH9075-3W (V72962)) (OPT T6S1032J (V71087)) (OPT VN303A02 (V92215)) (OPT 96-02 (V80539)) (OPT BRH10A3 (V52828))		3

27-38-11

 ILLUSTRATED PARTS LIST
 01.1 Page 1008
 Jul 01/92

BOEING
 COMPONENT
 MAINTENANCE MANUAL

FIG. & ITEM	PART NO.	AIRLINE PART NUMBER	NOMENCLATURE 1234567	EFF CODE	QTY PER ASSY
01-26	H10-3BAC		.NUT *[1] (V15653) (SPEC BACN10JC3) (OPT NS202101-02 (V80539)) (OPT RMLH9075-3W (V72962)) (OPT T6S1032J (V71087)) (OPT VN303A02 (V92215)) (OPT 96-02 (V80539)) (OPT BRH10A3 (V52828))		1
30	69-15812-1		.CRANK (ITEM 30A WITH ITEMS 12A AND 10A OR ITEM 30C WITH ITEM 12 AND ITEM 10 OPT TO ITEM 30 WITH ITEM 12 AND ITEM 10)	A-D, J,K	1
R -30A	69-71007-3		.CRANK (ITEM 30A WITH ITEMS 12A AND 10A OR ITEM 30C WITH ITEM 12 AND ITEM 10 OPT TO ITEM 30 WITH ITEM 12 AND ITEM 10)	A-D, J,K	1
R -30B	69-71007-3		.CRANK	E-H	1
R -30C	69-15812-2		.CRANK (ITEM 30A WITH ITEMS 12A AND 10A OR ITEM 30C WITH ITEM 12 AND ITEM 10 OPT TO ITEM 30 WITH ITEM 12 AND ITEM 10)	A-D, J,K	1
-30D	69-15812-2		.CRANK	L,M	1

27-38-11

ILLUSTRATED PARTS LIST
 01.1 Page 1009
 Jul 01/92

FIG. & ITEM	PART NO.	AIRLINE PART NUMBER	NOMENCLATURE 1234567	EFF CODE	QTY PER ASSY
R 01-35	65B80863-7		DELETED		
R 35A	65B80863-13		.BRACKET	A,C,E ,G,J, L	1
R -40	65B80863-6		DELETED		
R -40A	65B80863-12		.BRACKET	B,D,F ,H,K, M	1
R 45	13TX0115A		.TRANSMITTER- (V51761) (SPEC 60B40042-3) (OPT 7977-18-01 (V86197)) (OPT ITEM 45A)	A,B,E ,F	1
R -45A	13TX0615A		.TRANSMITTER- (V51761) (SPEC 60B40042-7) (OPT ITEMS 45, 45C)	A,B,E ,F	1
R -45B	13TX0615A		.TRANSMITTER- (V51761) (SPEC 60B40042-7) (OPT ITEM 45E)	C,D,G ,H	1
R -45C	7977-18-01		.TRANSMITTER- (V86197) (SPEC 60B40042-3) (OPT 13TX0115A (V51761)) (OPT ITEM 45A)	A,B	1
R -45D	9000401-1		DELETED		
R -45E	H505A		.TRANSMITTER- (V33463) (SPEC S250N104-1) (OPT ITEM 45B)	C,D,G ,H	1
R -45F	H509B		.TRANSMITTER (V33463) (SPEC S250N104-6) (OPT ITEMS 45G, 45H, 45J, 45K)	J,K	1

27-38-11

 ILLUSTRATED PARTS LIST
 01.1 Page 1010
 Jul 01/92


BOEING
 COMPONENT
 MAINTENANCE MANUAL

FIG. & ITEM	PART NO.	AIRLINE PART NUMBER	NOMENCLATURE 1234567	EFF CODE	QTY PER ASSY
R 01- -45G	H505B		.TRANSMITTER (V33463) (SPEC S250N104-4) (OPT ITEMS 45F,45H,45J, 45K)	J,K	1
R -45H	13TX0615A		.TRANSMITTER (V51761) (SPEC 60B40042-7) (OPT ITEMS 45F,45G,45J, 45K)	J,K	1
R -45J	13TX0115A		.TRANSMITTER (V51761) (SPEC 60B40042-3) (OPT 7977-18-01 (V86197)) (OPT ITEMS 45F,45G,45H)	J,K	1
R -45K	7977-18-01		.TRANSMITTER (V86197) (SPEC 60B40042-3) (OPT 7977-18-01 (V86197)) (OPT ITEMS 45F,45G,45H)	J,K	1
-45L	H509B		.TRANSMITTER (V33463) (SPEC S250N104-6)	L,M	1

*[1] ATTACHING PARTS

27-38-11

ILLUSTRATED PARTS LIST

01.1

Page 1011

Jul 01/92